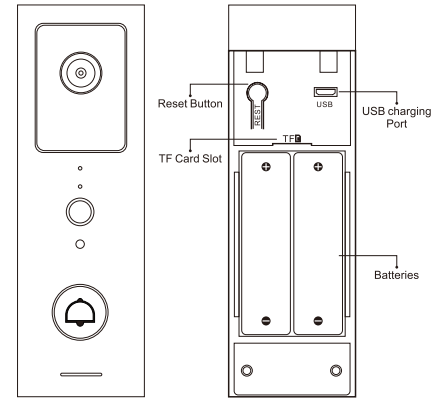




## Introduction

This device is a WiFi based Video Intercom Doorbell. People can install the mobile APP (TuyaSmart or Smartlife) to easily operate it.

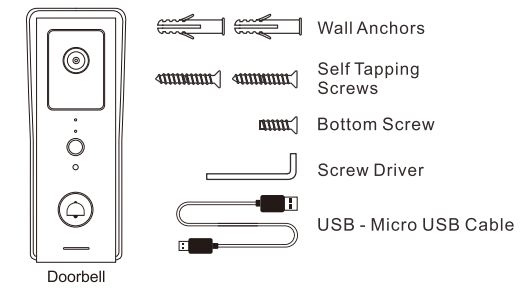


**Note: The battery must be placed in the right direction, otherwise the doorbell maybe broken**

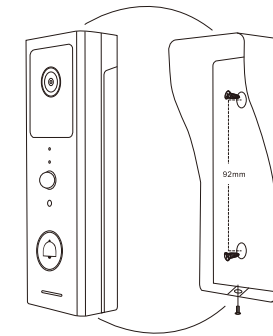
### Specification:

Network	2.4G WiFi Connection
Pixel	2.0Mpx (1080P)
Night Vision	IR-CUT (Colorful at daytime, black and white at night)
Extended Memory	Up to 128G TF card
Motion Detection	PIR Sensor
Intercom	Full duplex voice intercom
Other Functions	Playback; Take picture/video
Battery	Rechargeable Battery
USB Input	5V-2A
Physical Color	ABS Black (White optional)
Dimensions	
Doorbell	L140 x W45 x D26(mm)
Rain Cover	L145 x W51 x D42(mm)
Unit Weight	215g
Shipping Weight	250g

## Carton Inventory:



## Installation



## APP Operation

Here are just a few steps to get you started.

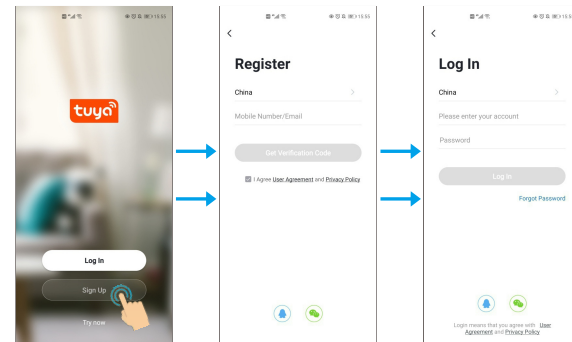
1) Free APP Downloading  
Search TuyaSmart or Smartlife on Google Play or APP Store



2) Make sure WiFi works on your mobile phone.

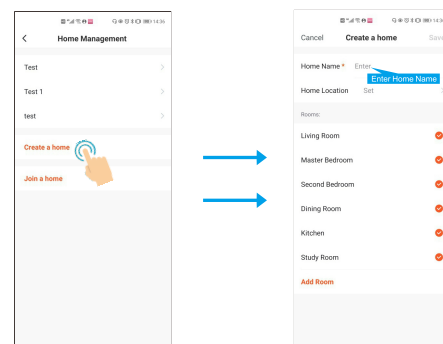
## 1. Register & Login

(Make sure the registered email is legal and valid, so that you can recover your password once forgotten. **Mobile Number is for China Mobile ONLY**)



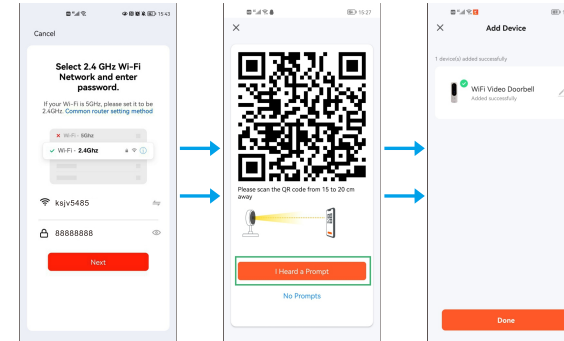
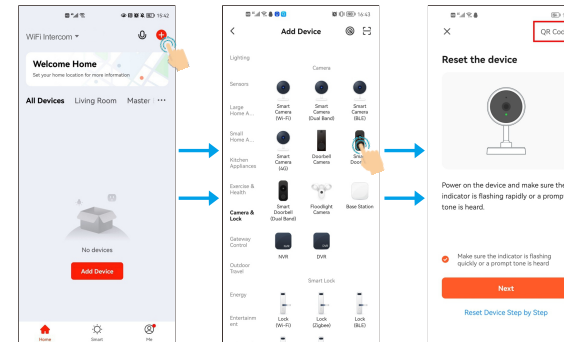
You will get a verification code in your mail box.

**Note: To better manage the devices and family members, you will need to create a HOME before you begin to manage this device.**



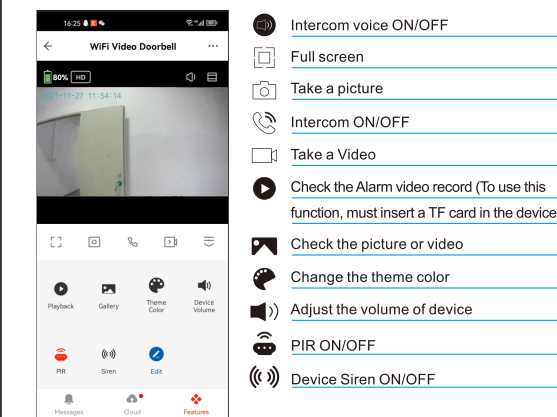
## 2. Add Device

You can add device by clicking 'Add Device' or clicking '+' on the top. Before Adding the device, please make sure it is in adding mode (Doorbell Red LED flashes)



**Note: Move the mobile slowly until hearing a prompt.**

## 3. Simple Operation



## 4. Reset the device

Press the reset button on the device, hold it until hear a voice.

## 5. LED Status

Adding Mode: Red LED flashes  
Connected: Blue LED flashes