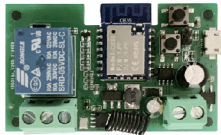


## 7-32V Click the Self-locking module

Model: TYWR 7-32V RF



### Parameters:

Input voltage: DC/AC 7V~32V /USB5V  
 Max.Current:2200W/10A  
 Wi-Fi Standard:Wi-Fi 2.4Ghz b/g/n+Bluetooth  
 Working temperature: -20°C~70°C  
 Size: 69\*41\*20mm

### Checklist before using the device

- Your smart phone or tablet has connected to a 2.4g WiFi with internet.
- You need to enable Bluetooth of the phone.
- You have the correct WiFi PWD.
- You smart phone or tablet must have access to APP store,Google play.
- Your router is MAC-open.

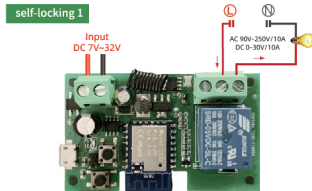
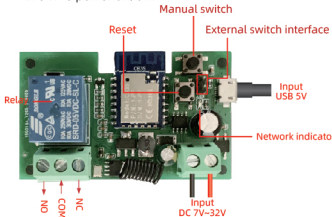
### User Guide

- 1 You can download the App by searching "Tuya Smart" in mobile app stores or scanning the following QR code



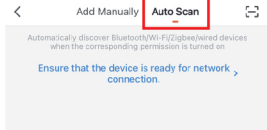
- 2 Register an Tuya Smart account.
- 3 If you have Tuya Smart account, just login.
- 4 Power on.

ON/OFF operating principle:  
 The connected appliances work/stop through live wire power on/off.



### Add devices

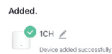
- 1 Reset the device first:  
 if the network indicator blinking fast (0.5S/time) , skip the reset step.  
 ① Power on  
 ② hold down the Reset button for 5 seconds, until network indicator(red light)blinking fast(0.5s/time).
- 2 Clicking + in the top right corner on tuya smart app, then click "Auto Scan", wait a few seconds, After the devices are found,Click "Next"



- 3 Select a 2.4GHz Wi-Fi network and enter your password.

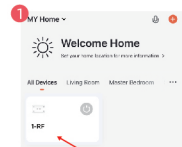


- 4 Name your device.



- 5 When the network is disconnected, the switch will automatically switch to the Bluetooth control of the phone.
- 6 Click the on/off buttons on the APP can control device,Manual control switch also can be display real-time on the APP.

### APP Function



Tip here to enter the full function operation interface.



Rename  
 /Offline Notification  
 /Third-party Control  
 /Share Device  
 /Create Group  
 /Remove Device

Countdown  
 /Schedule/  
 Circulate/Random/  
 Inching.

/Relay status  
 /Switch type set  
 /RF remote control setup

### Remote control matches the code

Matching:

- 1 Figure 2 interface, click setting> RF remote control setup>Add.
- 2 When the prompt interface pops up,then long press the remote control button you want to match
- 3 loosen the remote control buttons, matching success.
- 4 Added successfully, assign the remote control buttons to the switches that need to be controlled



### TROUBLESHOOTING

Solutions for the failure of product matching and offline:

Enter the homepage of App,click the icon in the lower right corner of the interface to enter.

