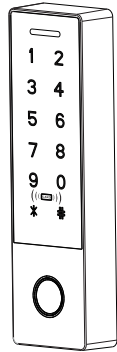


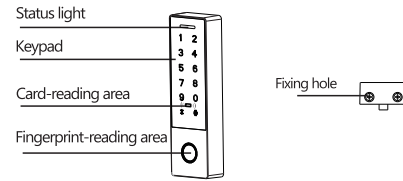
Fingerprint Access Control System User Manual



😊 Due to continuous update of our products

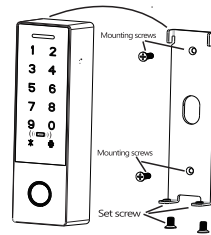
I. Product Overview and Installation Instruction

Applicable Models



S.N.	Functions
1	192 * 192 Capacitive fingerprint sensor
2	Built-in card reader
3	Fingerprint/ Card/ PIN access mode
4	Digital touch keypad
5	Wiegand output

- Operating Environment is as follows.
 - Room temperature: -20°C~+50°C
 - Relative humidity: 95%
- Operating Voltage & Current as follows.
 - Input DC: +12V
 - Standby current: ≤60mA
 - Operating current: ≤120mA

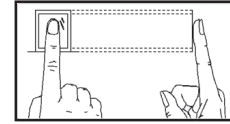


- 1 -

II. Inputting Fingerprint

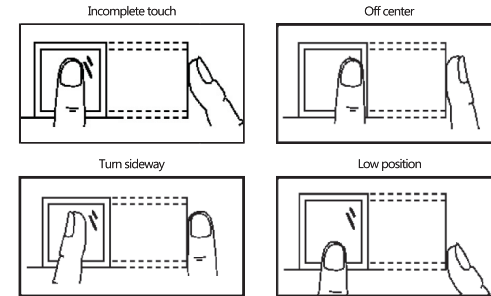
Suggested finger: index finger, middle finger or ring finger instead of thumb or little finger

1) Correct method



Use the finger to evenly press the center of fingerprint are

2) Wrong methods

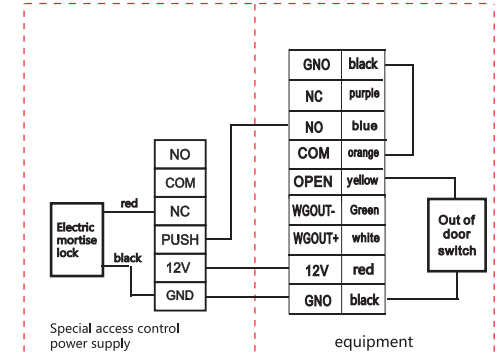


😊 Please input fingerprint correctly for verification, and improper operation might result in poor performance of this device

- 2 -

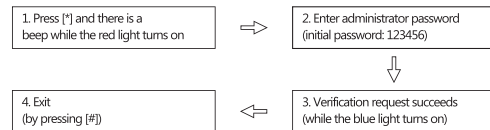
III. Connection power supply and lock

1. using special access control power supply wiring diagram



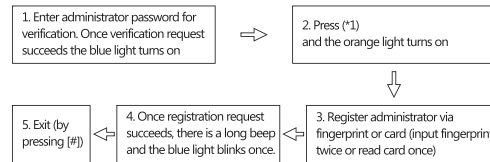
- 3 -

IV. Administrator Operation



Remarks:
After successful verification, user is allowed to register Administrator account. Then the initial password will be invalid.

4.1 Registering Administrator



Remarks:
1. It is allowed to register with 5 administrator only via fingerprint or card.

4.2 If the administrator password is lost.

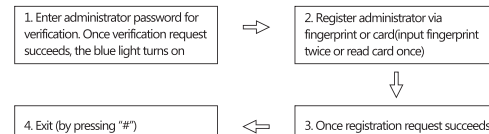
Power off, press the exit button, hold it and power on, there will be a long beep, release the button, means delete Administrators successfully

Attention: Do not release the # button until one long beep

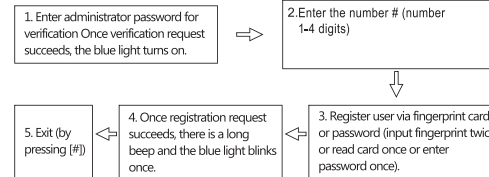
- 4 -

V. To enroll a new user

5.1 A new users ID will be generated automatically.



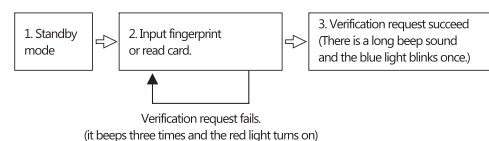
5.2 Register users by inputting the Employee ID directly



Note: the password is 6 bits

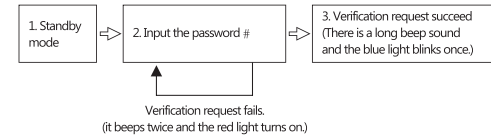
VI: Verification

6.1 User Verification via Fingerprint or Card



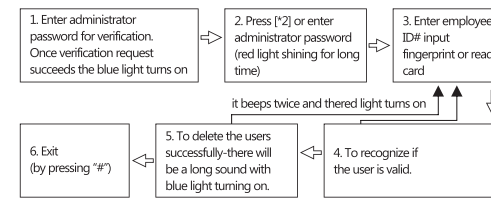
- 5 -

6.2 User Verification via Password

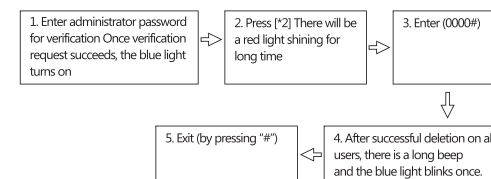


VII: Deleting Users

7.1 Delete a User



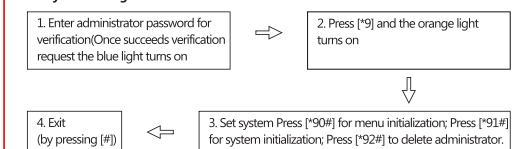
7.2 Delete All Users



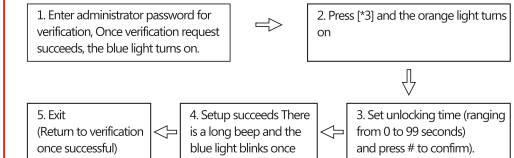
- 6 -

VIII: Access Control System Management

8.1 System Settings



8.2 Setup the time for unlocking.



IX: Unpacking

Description	Specifications	Quantity	Remarks
Device		1	
Packaging box		1	
Plastic plugs	Φ 4mmX28mm	2	For mounting and fixing
Self-tapping screws	Φ 4mmX28mm	2	For mounting and fixing

- 7 -