

SL-120 FAIL SECURE TYPE DEADBOLT LOCK INSTALLATION MANUAL

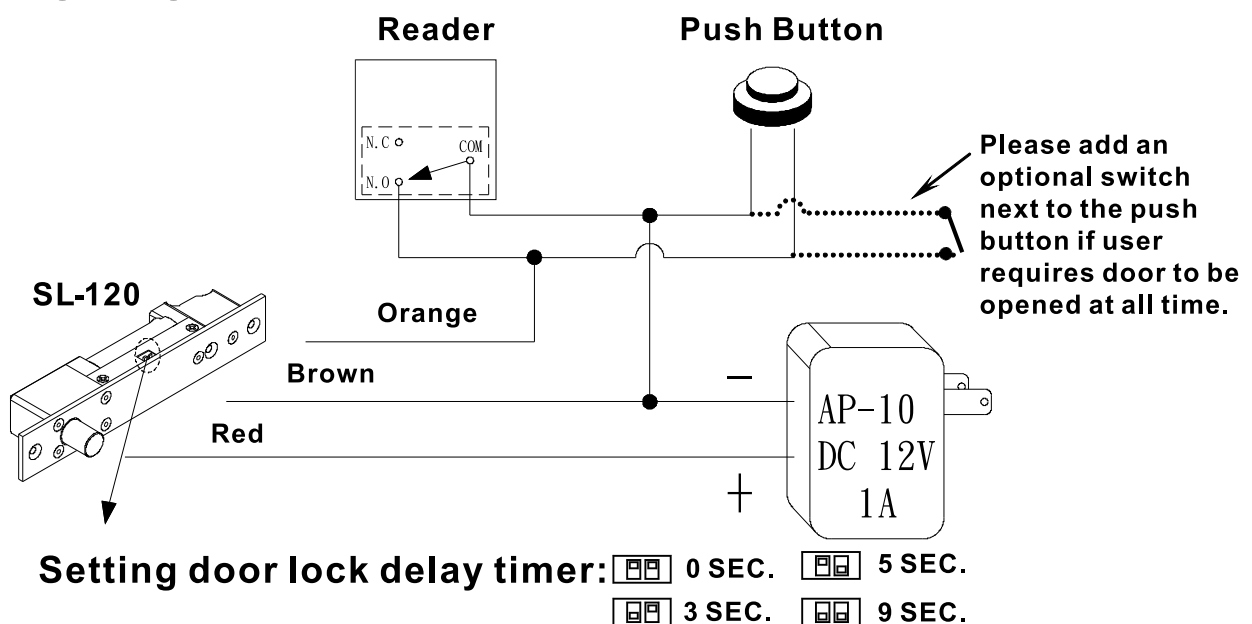
※Specifications

Power Supply	DC 12V / 1A
Current	Operation Current: 880mA Holding Current: 320mA
Operation Delay Time	0sec. 3sec. 5sec. 9sec.
Signal Output	Door Sensor(250mA) & Lock Position Sensor(3A/125VAC)
Face Plate	200 (L) X 32 (W) X 46 (H) mm
Strike Plate	90 (L) X 26 (W) X 2.5 (H) mm
Bolt	17mm (Throw) X 15.5mm (Diameter)
Safety Measures	(1)Fail-secure Type (Power to unlock). (2)Built-In Delayed Egress Control Point, and door will therefore lock automatically when door is not opened within 5 seconds.

※Connections

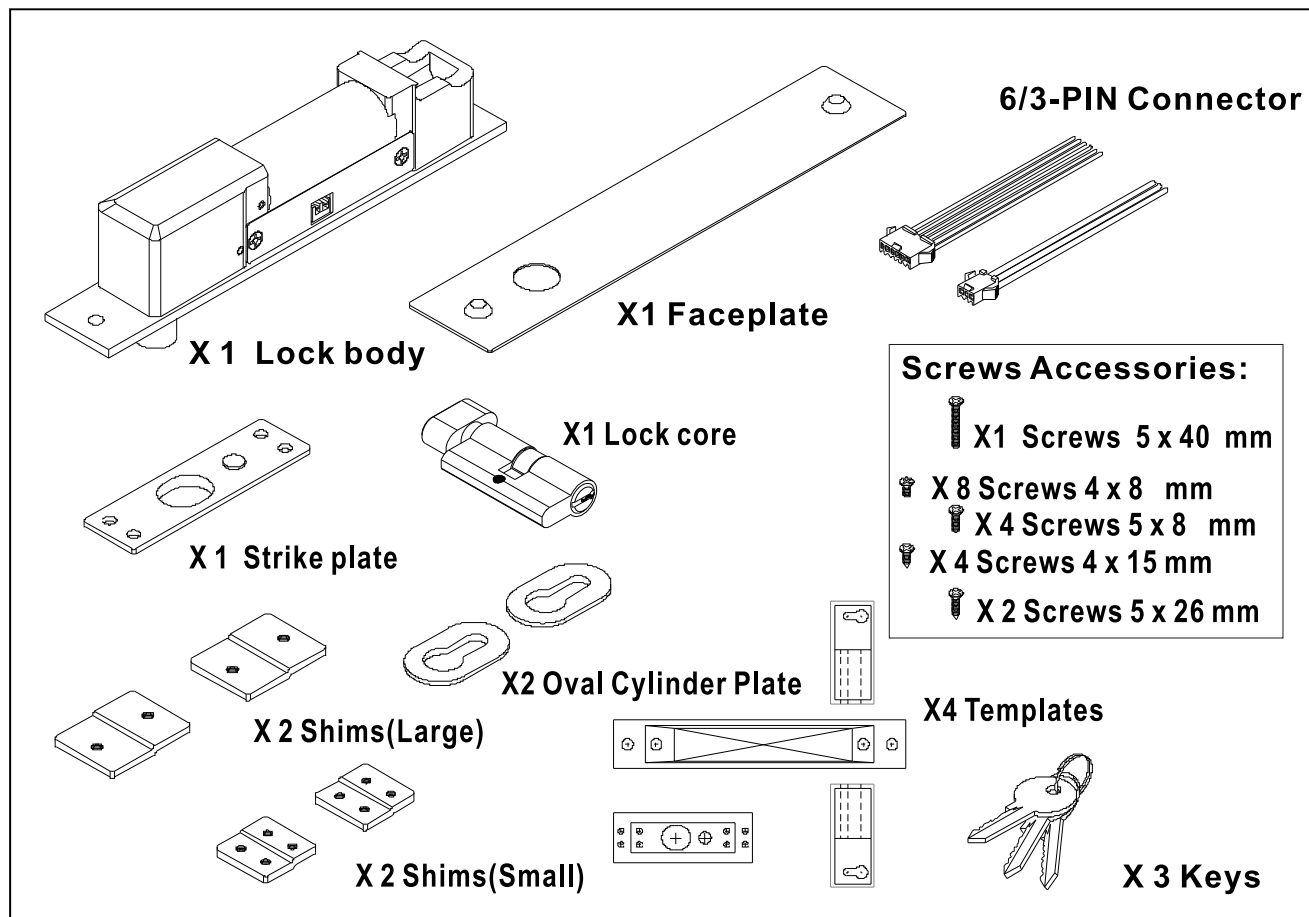
Model Color	6-PIN (SL-120A/SL-120B)	Model Color	3-PIN (SL-120B Only)
Brown	GND	Purple	Lock Position Sensor(N.C.)
Red	+DC12V	Gray	Lock Position Sensor(COM)
Orange	Push Button	Black	Lock Position Sensor(N.O.)
Yellow	Door Position Sensor(N.C.)		
Green	Door Position Sensor(COM)		
Bule	Door Position Sensor(N.O.)		

※Wiring Diagram



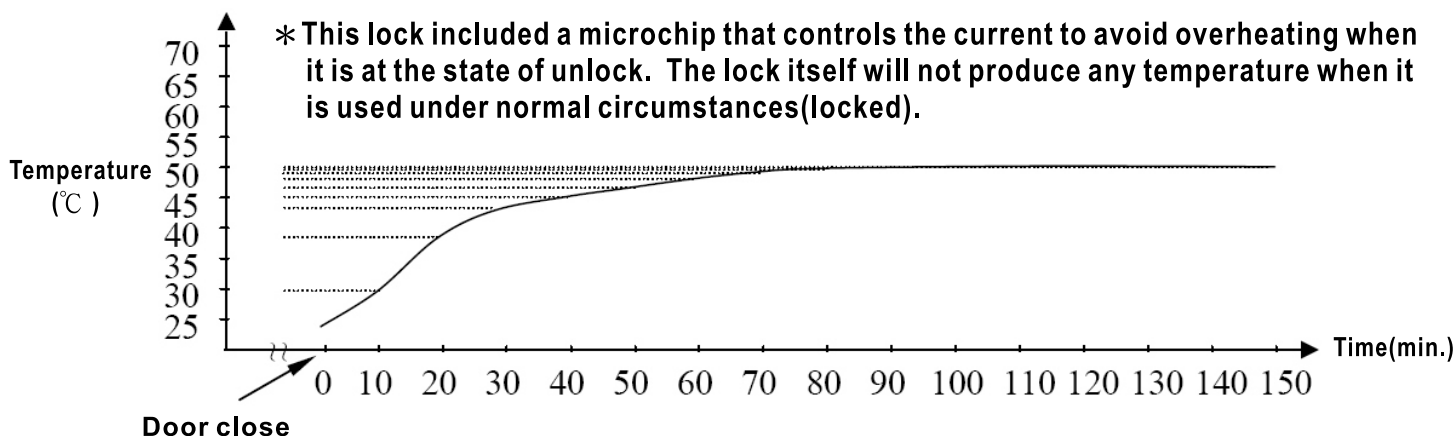
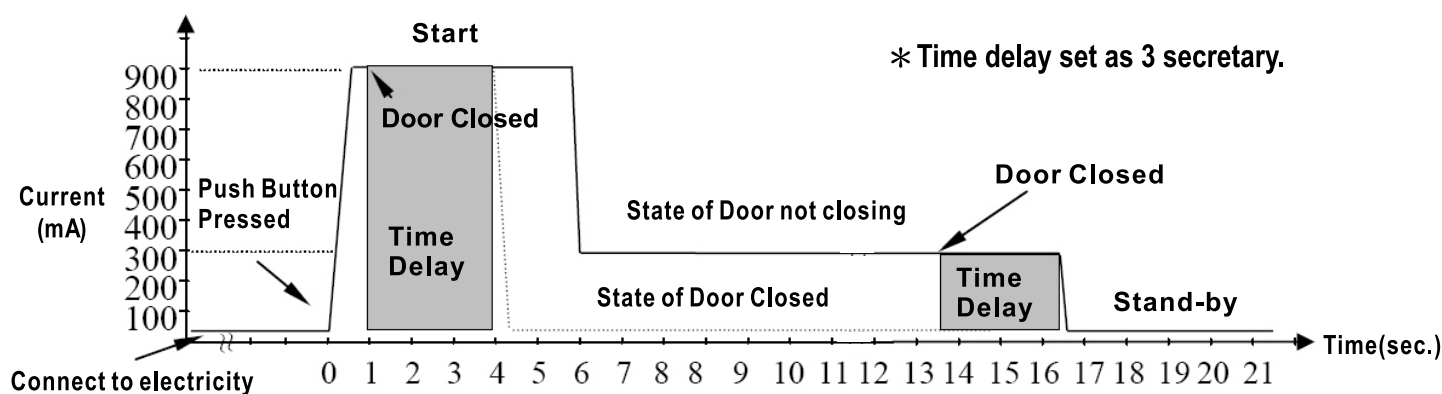
※ Please switch on the appliance again to validate any adjustment of DIP switch value.

※Accessories:



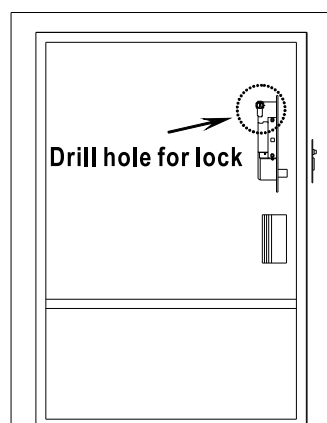
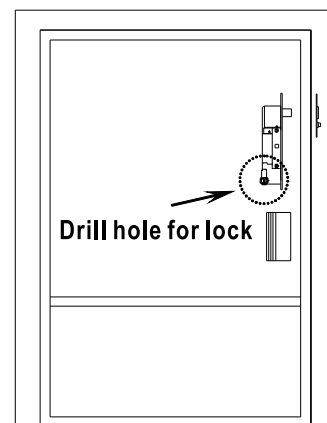
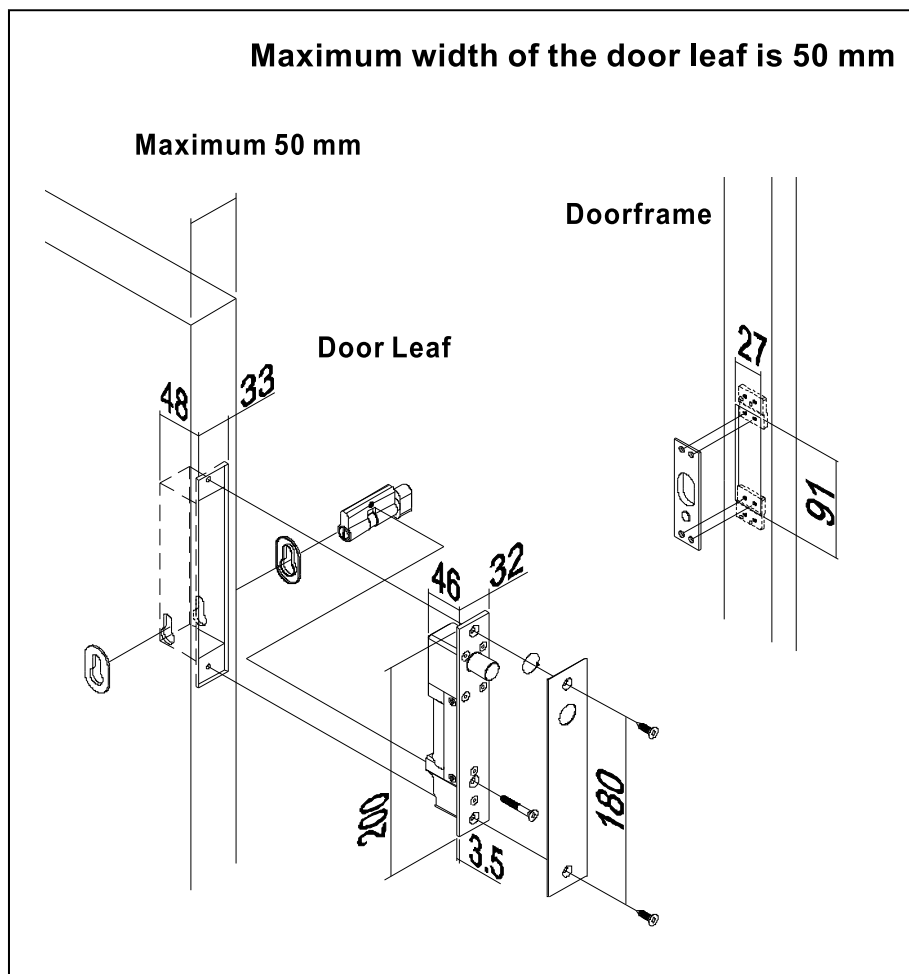
※Current and Temperature Chart

(Measurement: Power Supply DC-12V, Room temperature 25°C, Humidity 60% Rh)

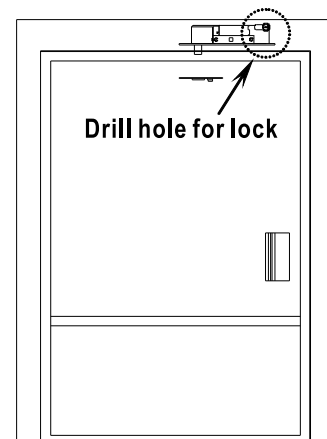
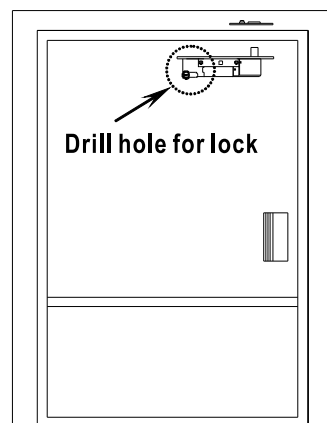


※Installation:

Install at the side of the door

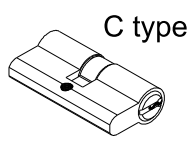
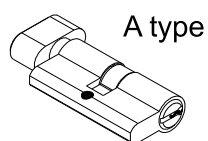


Install at the top side of the door



Please Note:

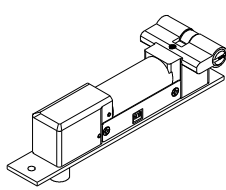
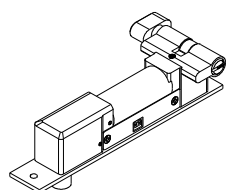
Two types of lock oval cylinder:



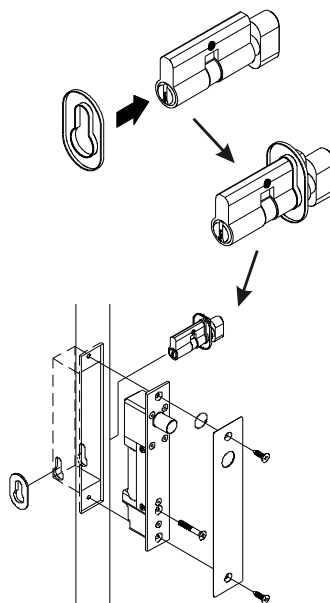
Unilateral
keyhole

Bilateral keyhole
(Optional)

Completed



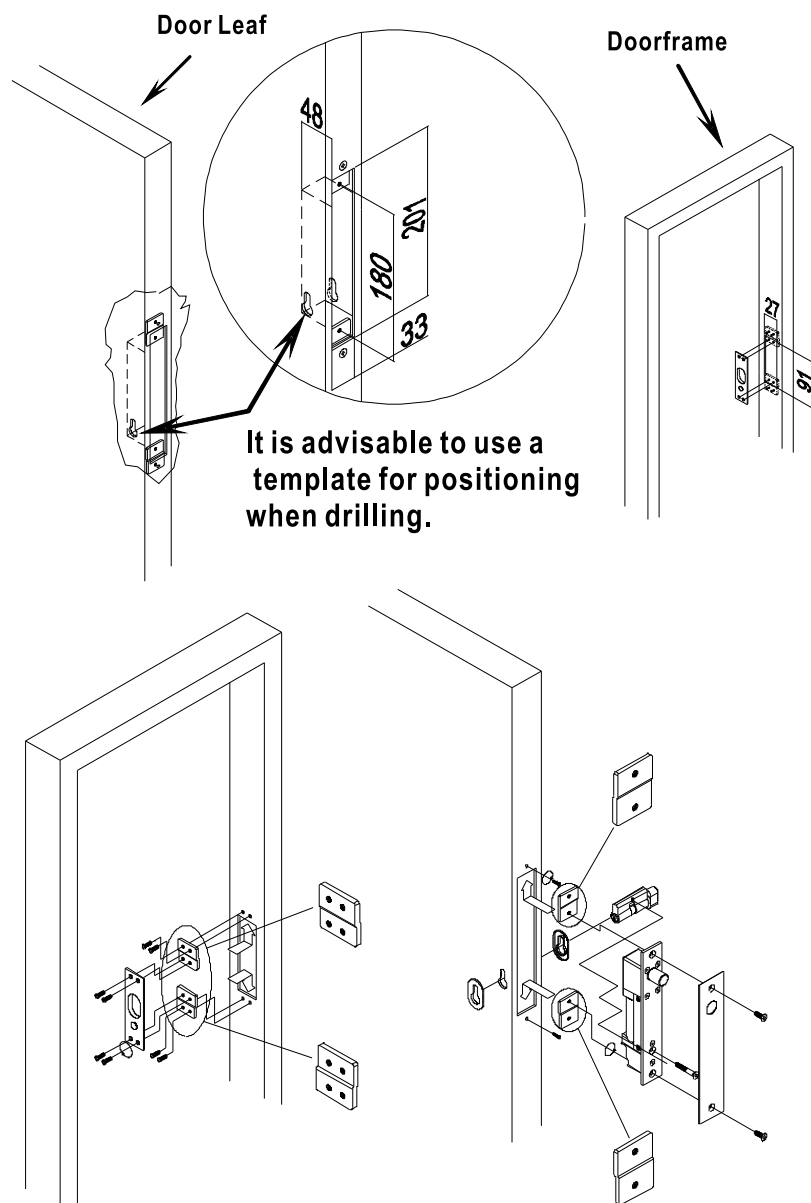
Insert the cover plate
in the keyhole unilateral.



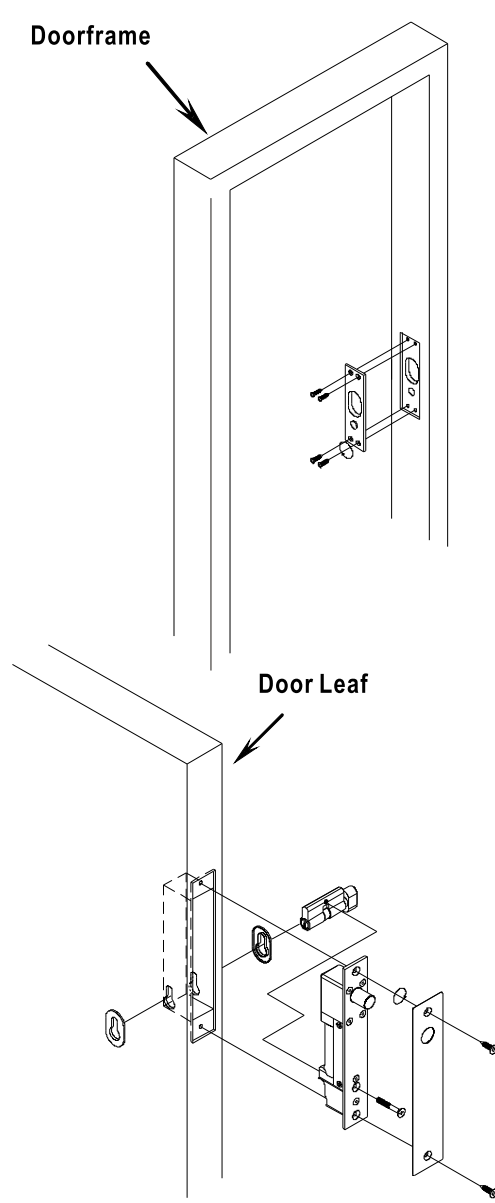
✂ Installation:

(* Note: Press push button to make sure bolt is back to its position when it is used for the first time)

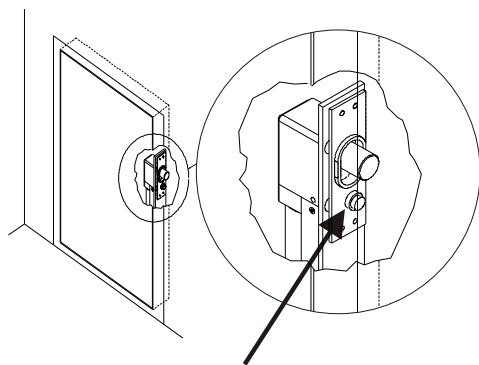
◎ For hollow metal doors:



◎ For wood doors:



◎ Completed:



✂ The relative position of bolt hole, magnet and the lock unit.

FAQ

◆ The lock is hot.

The unlock operation temperature of the lock is normally within 48°C (Please refer to Page 2 Current and Temperature Chart).

◆ No operation after installation.

1. Please check power supply.
2. Turn it on again and press push button.
3. Please make sure to place strike plate on the lock and aim the bolt hole with the bolt. Please make sure the position of the magnet is right before testing the electric lock.

◆ Lock did not function when the door is shut.

1. Please check power supply (12V/1A).
2. Please check if the direction and position of strike plate is being installed correctly.
3. Please check the connection points (N.O or N.C.)